

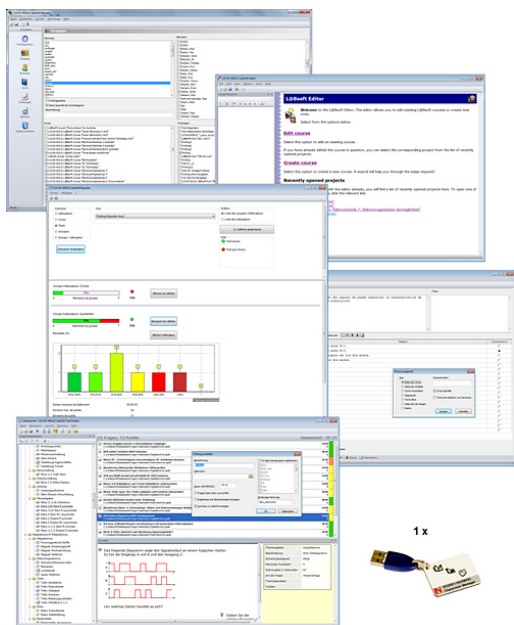
Table of Contents

| | |
|--|---|
| Table of Contents | 1 |
| UniTrain® | 2 |
| Learning management software - LabSoft Classroom Manager | 2 |

UniTrain®

UniTrain is a multimedia e-learning system with integrated, mobile electronics lab for general education and advanced training in electrical engineering and electronics.

Learning management software - LabSoft Classroom Manager



Learning management software - LabSoft Classroom Manager

LabSoft Classroom Manager is a comprehensive set of administration software for all LabSoft courses. Central administration of users, groups and LabSoft courses: Check learning progress, edit courses, create own courses and exams.

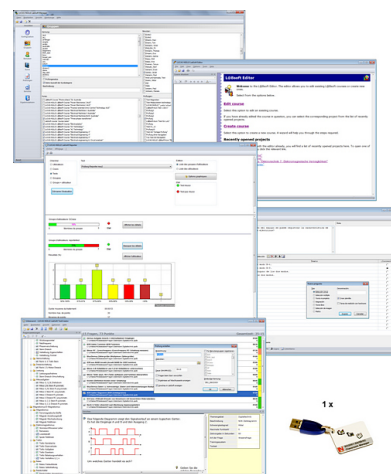
List of articles:

Optionally available: multi user license with 5 (SO2001-5C) or 10 (SO2001-5B) dongles

| Pos. | Product name | Bestell-Nr. | Anz. |
|------|--|-------------|------|
| 1 | LabSoft Classroom Manager 4.0 software suite, single license | SO2001-5A | 1 |

LabSoft Classroom Manager is a comprehensive set of administration software for the UniTrain system and all LabSoft courses. Classroom Manager comprises the following independent program components:

- LabSoft Manager: Administration of students and courses in LabSoft
- LabSoft Reporter: Student reports and statistics
- LabSoft Editor: Creation and editing of courses and tests
- LabSoft Questioner: Creation of questions, measuring exercises and sets of questions for courses and tests
- LabSoft TestCreator: Automatic generation of tests on the basis of sets of questions



Features:

- Ease of use of all programs thanks to graphical user interface in all component programs
- For use in local area networks or on stand-alone PC
- Ease of installation
- No additional database software required
- Access control via USB dongle
- Available languages: DE, EN, ES, FR, RU, PT, ZH, LO

LabSoft Manager:

- Administration of LabSoft network installation
- Administration of an unlimited number of students and courses in LabSoft
- Addition, deletion and editing of courses and tests in LabSoft
- Addition, deletion and editing of students and student data
- Addition, deletion and editing of student groups (classes)
- Assignment of students to classes
- Assignment of courses and tests to students or classes

LabSoft Reporter:

- Electronic monitoring of student progress
- Graphical presentation of progress in courses and tests
- Presentation of student or group results
- Reports on courses, tests, single users or classes
- Summary of results and time
- Calculation of average results for groups
- Multiple search options for students, classes, courses or tests

LabSoft Editor:

- HTML editor for easy to use editing of LabSoft courses
- Editing of course pages
- Wizard for creation of new courses and course pages
- Automatic inclusion of new courses in an existing LabSoft installation
- Automatic creation of IMS-compatible navigation tree without the need for programming knowledge
- Moving course pages within the navigation tree at the click of a mouse
- Editing in WYSIWYG mode
- HTML view and page preview
- Insertion of graphics, animations and tables
- Insertion of test questions
- Page templates for a variety of page types

LabSoft Questioner:

- Program for creating and editing questions, practical measuring exercises and sets of questions (question files) for electronic evaluation
- Easy creation of exercises and questions for courses and tests
- 7 different types of question: single and multiple choice, missing text, assignment, matrices, arbitrary text, selection of images
- Ability to input meta data (points, time for questions, difficulty, required resources, etc.)
- Easy specification of tolerances for practical measuring exercises

LabSoft TestCreator:

- Program for automatically creating electronic tests from sets of questions (question files)
- Automatic and manual selection of questions and measuring exercises
- Filter functions (e.g.: type of question, difficulty) for pre-selection of questions
- Automatic generation of tests according to a set time or number of questions
- Various test options: arbitrary order of questions in a test, immediate display of results after completion
- Automatic registration of tests in LabSoft
- Preview function showing the test as created

Includes:

- CD-ROM with LabSoft Classroom Manager
- 1 USB-dongle for operation of program

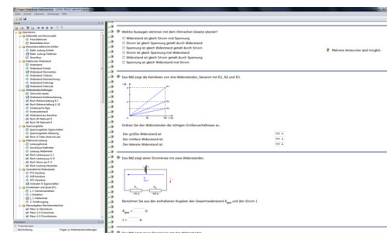
System requirements:

- Server or PC with Windows Vista, 7, 8 or 8.1
- Microsoft Internet Explorer 7.0 or higher
- Minimum 100 MB free disk space
- 1 free USB-port for USB-dongle

Additionally recommended

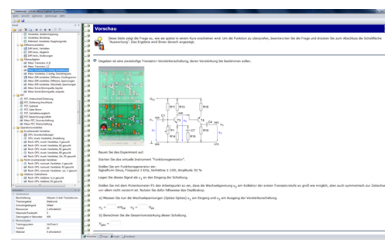
| Pos. | Product name | Bestell-Nr. | Anz. |
|------|--|-------------|------|
| 2 | Collection of assignments Electrical engineering UniTrain | SO2001-6A | 1 |

Collection of electronic assignments with questions and measuring exercises for the UniTrain courses on the topic of electrical engineering. With the help of LabSoft TestCreator, these questions and measuring exercises can easily be assembled into electronic tests.



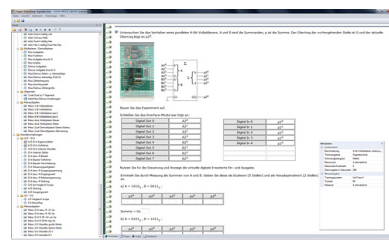
- A total of some 200 questions and measuring exercises for the UniTrain courses on the topics of DC technology, AC technology, three-phase technology, magnetism/electromagnetism, conducting measurements using multimeters, circuit analysis and electromagnetic compatibility (EMC)
- About 25% are practical exercises to be carried out using the training systems in order to test handling skills and practical abilities
- About 30% are newly assembled questions previously contained in the courses
- It is possible to extend the collection with your own questions and assignments
- Other collections can be imported
- All questions and assignments can be edited
- 6 different types of questions (single choice, multiple choice, missing text, matching, matrix matching and image choice)
- Extensive metadata for all questions and assignments to make it easier to create tests (degree of difficulty, points, topic area, time to complete, type of question, training systems needed for practical exercises)

Collection of electronic assignments with questions and measuring exercises for the UniTrain and EloTrain courses on the topic of electronics. With the help of LabSoft TestCreator, these questions and measuring exercises can easily be assembled into electronic tests.



- A total of some 200 questions and measuring exercises for the UniTrain courses on the topics of semiconductor components, transistor multivibrators, transistor and amplifier technology, field effect transistors, operational amplifiers, power semiconductor devices, analog power supplies, switched mode power supplies, circuit design using NI Multisim, PCB layout with NI Ultiboard and the EloTrain courses on semiconductors, basic electronic circuits and optoelectronics
- About 25% are practical exercises to be carried out using the training systems in order to test handling skills and practical abilities
- About 30% are newly assembled questions previously contained in the courses
- It is possible to extend the collection with your own questions and assignments
- Other collections can be imported
- All questions and assignments can be edited
- 6 different types of questions (single choice, multiple choice, missing text, matching, matrix matching and image choice)
- Extensive metadata for all questions and assignments to make it easier to create tests (degree of difficulty, points, topic area, time to complete, type of question, training systems needed for practical exercises)

Collection of electronic assignments questions and measuring exercises for the UniTrain courses on the topic of digital technology. With the help of LabSoft TestCreator, these questions and measuring exercises can easily be assembled into electronic tests. The tests can then be carried out in LabSoft.



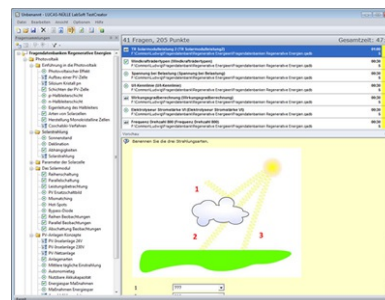
- A total of some 200 questions and measuring exercises for the UniTrain courses on the topics of logic gates and flip-flops, Boolean algebra, sequential circuit, applied circuits (counters, adders, multiplexers), A/C and D/C converter circuits
- About 25% are practical exercises to be carried using the training systems in order to test handling skills and practical abilities
- About 30% are newly assembled questions previously contained in the courses
- It is possible to extend the collection with your own questions and assignments
- Other collections can be imported
- All questions and assignments can be edited
- 6 different types of questions (single choice, multiple choice, missing text, matching, matrix matching and image choice)
- Extensive metadata for all questions and assignments to make it easier to create tests (degree of difficulty, points, topic area, time to complete, type of question, training systems needed for practical exercises)

5 Collection of assignments Power Engineering / Renewable Energies

SO2001-6D

1

Collection of electronic assignments questions and measuring exercises for the UniTrain courses on the topic of electrical power engineering and renewable energies. With the help of Labsoft TestCreator, these questions and measuring exercises can easily be assembled into electronic tests. The tests can then be carried out in LabSoft.

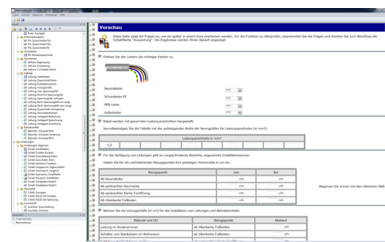


- A total of some 200 questions and measuring exercises for the UniTrain courses on the topics of Photovoltaics, Fuel cell technology, Transient processes in AC and DC networks and the multimedia course Small wind power plant
- About 25% are practical exercises to be carried using the training systems in order to test handling skills and practical abilities
- About 30% are newly assembled questions previously contained in the courses
- It is possible to extend the collection with your own questions and assignments
- Other collections can be imported
- All questions and assignments can be edited
- 6 different types of questions (single choice, multiple choice, missing text, matching, matrix matching and image choice)
- Extensive metadata for all questions and assignments to make it easier to create tests (degree of difficulty, points, topic area, time to complete, type of question, training systems needed for practical exercises)

6 Collection of assignments Building management systems

SO2001-6E

1



7 Aufgabensammlung Prüfungsvorbereitung (Teil 1) im Elektrohandwerk

SO2001-6P

1

Elektronische Aufgabensammlung mit Fragen und Messaufgaben für die Vorbereitung der Abschlussprüfung (Teil 1) im Elektrohandwerk. Mit Hilfe des Labsoft TestCreators können die Fragen und Messaufgaben mühelos zu elektronischen Prüfungen zusammengestellt werden.

- Insgesamt 200 Fragen und Aufgaben zur Prüfungsvorbereitung auf den schriftlichen Teil der Abschlussprüfung (Teil 1) für Elektroberufe im Handwerk.
- Aufgaben aus den Bereichen Elektrotechnik, Gebäudesystemtechnik und Digitaltechnik
- Themen: Gleich-, Wechsel- und Drehstromtechnik, Messtechnik, Elektronik, Steuerungstechnik und Schutzmaßnahmen
- Aufgabensammlung um eigene Fragen und Aufgaben erweiterbar
- Import weiterer Aufgabensammlungen
- Alle Fragen und Aufgaben editierbar
- Verschiedene Fragentypen
- Umfangreiche Metadaten zu allen Fragen und Aufgaben erleichtern die Fragenauswahl (Schwierigkeitsgrad, Punktzahl, Themengebiet, Bearbeitungsdauer, Fragentyp)

