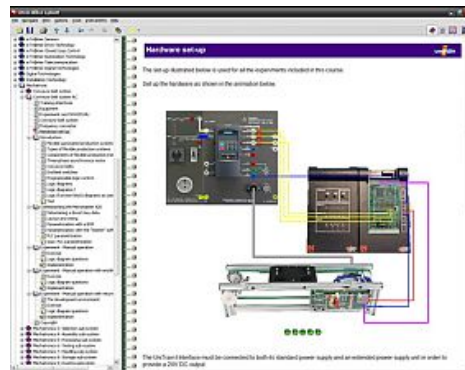


Item No.: SO4204-8L

## Course - Mechatronics 1.3: Transfer system with three-phase drive

### Includes:

- 1 Experiment card featuring CPU with PLC functionality and PROFIBUS-DP master interface, 8 digital inputs (4 using 2-mm sockets) with simulation switches and status LEDs, 8 digital outputs with status LEDs using 2-mm sockets, 8 analog inputs with 10-bit resolution, 4 analog outputs, potentiometer for simulating analog inputs, selectable level for digital signals 5/24V DC, 0- 10V for analog signals, port for external PROFIBUS equipment
- Profibus cable 1,5m
- CD-ROM with Labsoft browser, programming and course software



### Components additionally required to complete the course:

IMS1.3 AC transfer system (Conveyor belt)

### Course contents:

- Assembly, configuration and testing of mechanical components
- Control of speed and direction using a frequency converter drive
- Automatic sequence control via programmable logic control
- Implementation of movement in manual mode
- Automatic transport of a pallet with a programmed delay
- Programming movement sequences using end-limit switches
- Slip monitoring
- Course duration: 5 h approx.