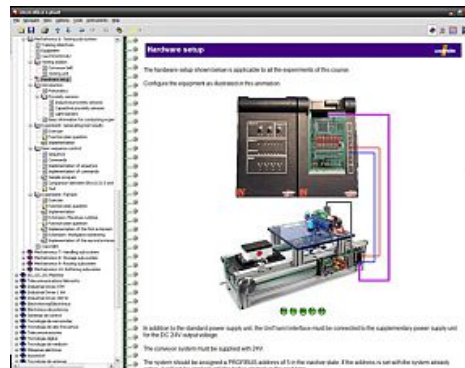


Item No.: SO4204-8Q

Course - Mechatronics 6: Testing sub-system

Includes:

- 1 Experiment card featuring CPU with PLC functionality and PROFIBUS-DP master interface, 8 digital inputs (4 using 2-mm sockets) with simulation switches and status LEDs, 8 digital outputs with status LEDs using 2-mm sockets, 8 analog inputs with 10-bit resolution, 4 analog outputs, potentiometer for simulating analog inputs, selectable level for digital signals 5/24V DC, 0- 10V for analog signals, port for external PROFIBUS equipment
- Profibus cable 1,5m
- CD-ROM with Labsoft browser, programming and course software



Components additionally required to complete the course:

IMS6 Testing

Course contents:

- Assembly, configuration and testing of pneumatic cylinders and valves
- Optical test sensors
- Inductive test sensors
- Capacitive test sensors
- Magnetic test sensors
- Definition of a processing sequence for simple testing of a workpiece
- Programming a flasher component and a stop cylinder
- Programming a testing sequence in manual and automatic modes
- Course duration: 4 h approx.