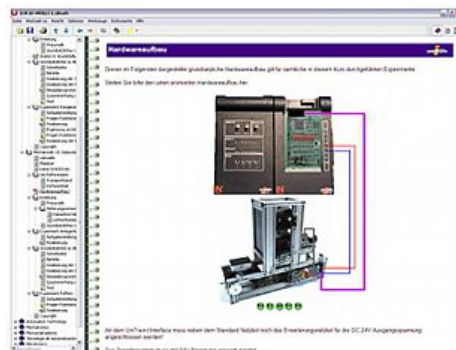


Item No.: SO4204-8X

Course - Mechatronics 10: Buffering sub-system

Includes:

- 1 Experiment card featuring CPU with PLC functionality and PROFIBUS-DP master interface, 8 digital inputs (4 using 2 mm sockets) with simulation switches and status LEDs, 8 digital outputs with status LEDs using 2mm sockets, 8 analog inputs with 10 bit resolution, 4 analog outputs, potentiometer for simulating analog inputs, selectable level for digital signals 5/24V DC, analog signal level 0- 10V, port for external PROFIBUS equipment
- Profibus cable 1,5m
- CD-ROM with Labsoft browser, programming and course software



Additionally required components to complete the course:

IMS 10 Buffering

Course contents:

- Assembly, calibration and testing of pneumatic cylinders and valves
- Definition of processing sequence for a buffering station
- Programming a buffering sequence in manual and automatic modes
- Programming a sequence of steps
- Course duration: 4 h approx.