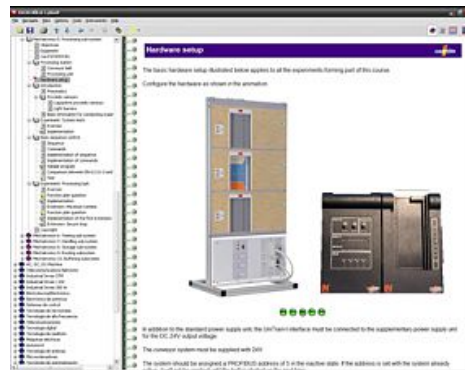


Item No.: SO4204-8T

## Course - Automation Technology 2: PLC model lift application

### Includes:

- 1 Experiment card containing CPU with PLC functionality and PROFIBUS-DP master interface, 8 digital inputs with simulation switches and status LED, 8 digital outputs with status LED connected via 2mm socket, 8 analog inputs with 10-bit resolution, 4 analog outputs, potentiometer for simulating analog inputs, selectable levels for digital signals 5/24V DC, level for analog signals 0-10V, external PROFIBUS devices may also be connected
- CD-ROM with Labsoft browser and course software



### Additionally required for course:

- Model lift with three storeys LM9545
- Illuminated call button for each storey
- Three illuminated floor selection buttons in the lift cage itself
- Direction indicators on each storey and in the lift cage
- 7-segment floor indicators
- Safety mechanism to prevent crushing of fingers by plexiglass front



### Course contents:

- Manual control for motors
- Detection of sensor signals
- Lift control for two storeys
- Lift control for three storeys
- Lift control with door opening/closing
- Introduction to automatic stop functionality plus programming
- Course duration: 4 h approx.