



Table of Contents

Table of Contents	1
Automotive Hybrid & EV	2
Automotive Electric and Electronic Trainer	2
Lighting Trainer	3
Training Panel Systems	4
ALC 1.2 Auxiliary Lighting Trainer	4

Automotive | Hybrid & EV

Automotive Electric and Electronic Trainer



Automotive Electric and Electronic Trainer

A modern vehicle is characterised by its high degree of electrification. This means that most open and closed-loop control processes are carried out using electro-mechanical systems. These systems, as well as all those designed to enhance driver comfort and drivability, require a stable and fail-safe power supply to ensure the finest quality of driving, leading to utmost comfort for drivers.

Lucas-Nülle training systems for automotive technology offer trainees the outstanding opportunity to learn about the various aspects of how on-board vehicle networks are supplied with electrical power at an authentic practical level. They also get a vivid and detailed look at how the lighting systems work and how they can subsequently be enhanced.

Lighting Trainer



Lighting Trainer

Hardly any other design element is as distinctive to a vehicle as its headlights. New shapes and light sources are continually emerging. Nevertheless, they all have one thing in common. They need electricity and have to be connected to the on-board network. Learn the difference between conventional wiring and a lighting system using a CAN bus. Control of rear lights by means of pulse-width modulation is also explained in great detail.

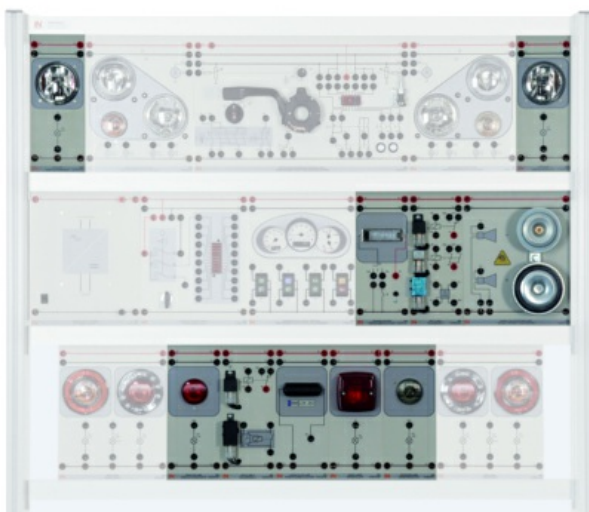
Training Panel Systems



Training Panel Systems

Please choose your product:

ALC 1.2 Auxiliary Lighting Trainer



ALC 1.2 Auxiliary Lighting Trainer

This system is used to cover the topics involving auxiliary headlights and signalling systems – the latter is obligatory in every vehicle and thus enjoys special consideration in training programs. What is of interest here is that control of these components can vary depending on the vehicle. For that reason, instructors can only profit from a system that allows them to become familiar with different versions of these right there in the classroom.

Supplement to basic set, consisting of:

Supplement to basic set, consisting of:

Pos.	Product name	Bestell-Nr.	Anz.
1	Auxiliary lamp	CO3216-2B	2

The auxiliary lamp can be used as a fog lamp, searchlight or for other auxiliary lighting purposes.

- Operating voltage: 12V
- Headlamp: 55 W/H3
- Inputs and outputs: 4mm sockets
- Dimensions: 297x114x70mm
- Weight: 1.4kg



2 Rear fog lamp

CO3216-2E

1

The rear fog lamp is suitable for subsequent installation and for supplementing the overall lighting system.

- Operating voltage: 12V
- Power: 21W
- Inputs and outputs: 4mm sockets
- Dimensions: 297x114x120mm
- Weight: 1.0kg



3 Reversing lamp

CO3216-2F

1

The reversing light is suitable for subsequent installation and for supplementing the overall lighting system.

- Operating voltage: 12V
- Power: 21W
- Inputs and outputs: 4mm sockets
- Dimensions: 297x114x120mm
- Weight: 1.0kg



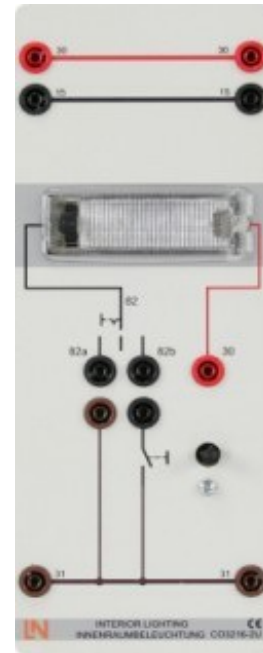
4 Interior lighting

CO3216-2U

1

Depending how vehicle interiors are used, the dominant criteria for the lighting may be ease of vision, comfort of vision or creating a certain visual ambience.

- Operating voltage: 12V
- Power: 5W
- Inputs and outputs: 4 mm sockets
- Dimensions: 297 x 114 x 120mm
- Weight: 1.0kg



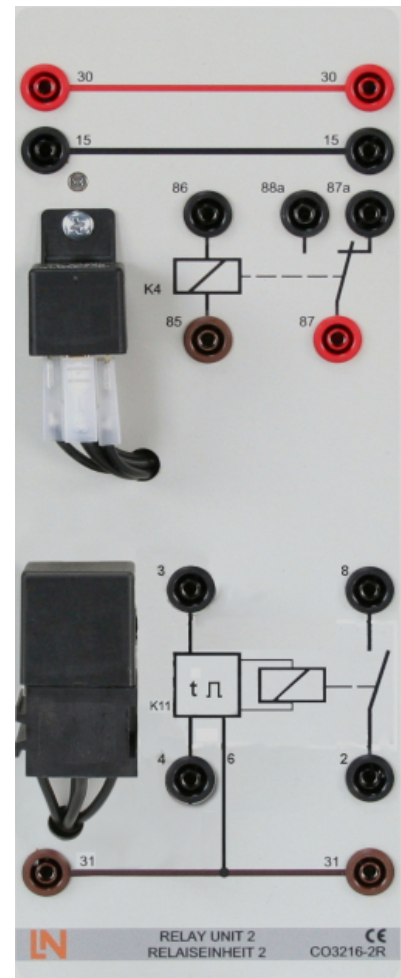
5 Relay unit 2, auxiliary lighting, relay1x c.o., time-delay relay

CO3216-2R

1

Relay unit serves to indirectly operate auxiliary lighting systems.

- Operating voltage: 12 V
- Functional elements: time-delay relay relay 1W 15A
- Inputs/outputs: 4-mm safety sockets
- Dimensions: 297 x 114 x 120 mm



6 Extra brake light

CO3216-2W

1

New vehicles now have to be equipped with a third brake light.

- Operating voltage: 12V
- Power: 21W
- Inputs and outputs: 4mm sockets
- Dimensions: 297x114x120mm
- Weight: 1.0kg



7 Standard & power horn (Normal & Supertone)

CO3216-3B

1

Normal tone horn and super-tone horn for setting up signalling systems for vehicles with engines larger than 50 cc.

- Operating voltage: 12V, connected to earth
- Normal tone horn: 50W / 335Hz / 110dB
- Super-tone horn: 70W / 400 Hz / 115dB
- Inputs and outputs: 4mm sockets
- Dimensions: 297x228x100mm
- Weight: 1.4kg



8 Licence plate Illumination

CO3216-3A

1

Illumination of a licence plate means providing lighting for the plate so that it can be easily read in the dark.

- Operating voltage: 12V
- Power: 5W
- Inputs and outputs: 4 mm sockets
- Dimensions: 297 x 114 x 120mm
- Weight: 1.0kg

