

KUKA



KUKA Positioners

The right solution for every application.



Whether standardized or customized – the optimum solution for every positioning task.



High productivity. Higher throughput, fewer rejects or the quick change of tool carriers: dynamic drives, perfect coordination between robot and positioner, and machine data that can be individually optimized for cycle time optimization enable successful production.

Efficiency and profitability. Robot positioner systems make use of proven KUKA robot components with a high proportion of identical parts. Preconfigured elements ensure reduced integration time, while KUKA.Sim ensures complete and easy simulation capability.

Uncompromising quality. Robots and positioners from KUKA operate with high precision and virtually error-free in all CP applications. The result of flexible, repeatable performance is consistently flawless workpieces.


Integration – simple, safe, fast. Electrically insulated face plates, easy mastering with the KUKA EMD and simple programming: proven and familiar solutions and standardized interfaces stand for efficient integration and fast implementation of individual customer solutions.

Customized solutions from a single source. From robots and positioners to linear units and other components: the modular system ensures simple implementation of customer-specific solutions and thus precise coordination between positioners and workstations.

 **KP1-MD**

	KP1-MD500-2	KP1-MD750-2	KP1-MD1000-2	KP1-MD1500-2	KP1-MD2000
Rated payload	500 kg	750 kg	1,000 kg	1,500 kg	2,000 kg
Installation position	Floor, ceiling, wall, angle	Floor, ceiling, wall, angle	Floor, ceiling, wall, angle	Floor, ceiling, wall, angle	Floor, ceiling, wall, angle
Loading height	417 mm	417 mm	417 mm	417 mm	505 mm
Hollow shaft Ø	-	-	-	-	-



 **KP1-MD HW**

	KP1-MD250 HW	KP1-MD500 HW	KP1-MD750 HW
Rated payload	250 kg	500 kg	750 kg
Installation position	Floor, ceiling, wall, angle	Floor, ceiling, wall, angle	Floor, ceiling, wall, angle
Loading height	417 mm	417 mm	417 mm
Hollow shaft Ø	60 mm	60 mm	60 mm



 **KP1-MDC**

	KP1-MDC500-2	KP1-MDC750-2	KP1-MDC1000-2
Rated payload	500 kg	750 kg	1,000 kg
Installation position	Floor, ceiling, wall, angle	Floor, ceiling, wall, angle	Floor, ceiling, wall, angle
Loading height	417 mm	417 mm	417 mm
Hollow shaft Ø	-	-	-
Counterbearing hollow shaft Ø	68 mm	68 mm	68 mm

	KP1-MDC1500-2	KP1-MDC2000	KP1-MDC4000
Rated payload	1,500 kg	2,000 kg	4,000 kg
Installation position	Floor, ceiling, wall, angle	Floor, ceiling, wall, angle	Floor, ceiling, wall, angle
Loading height	417 mm	505 mm	505 mm
Hollow shaft Ø	-	-	-
Counterbearing hollow shaft Ø	68 mm	69 mm	69 mm



 **KP1-MDC HW**

	KP1-MDC250 HW	KP1-MDC500 HW	KP1-MDC750 HW	KP1-MDC1000 HW
Rated payload	250 kg	500 kg	750 kg	1,000 kg
Installation position	Floor, ceiling, wall, angle	Floor, ceiling, wall, angle	Floor, ceiling, wall, angle	Floor, ceiling, wall, angle
Loading height	417 mm	417 mm	417 mm	417 mm
Hollow shaft Ø	60 mm	60 mm	60 mm	60 mm
Counterbearing hollow shaft Ø	68 mm	68 mm	68 mm	68 mm



KP1-MC

	KP1-MC1500-2
Rated payload	1,500 kg
Installation position	Floor, ceiling, wall, angle
Loading height	417 mm
Counterbearing hollow shaft Ø	68 mm



KP1-MB HW

	KP1-MB2000-2 HW	KP1-MB4000-2 HW	KP1-MB6000-2 HW
Rated payload	2,000 kg	4,000 kg	6,000 kg
Installation position	Floor	Floor	Floor
Loading height	449 mm	449 mm	593 mm
Hollow shaft Ø	136 mm	136 mm	-



KP1-V

	KP1-V500	KP1-V1000
Rated payload	500 kg	1,000 kg
Installation position	Floor	Floor
Loading height	705 mm	705 mm
Hollow shaft Ø	60 mm	60 mm



KP1-H

	KP1-H500-2	KP1-H750-2	KP1-H1000-2	KP1-H1500-2
Rated payload	500 kg	750 kg	1,000 kg	1,500 kg
Max. tool radius (in steps of 200 mm)	800 mm to 1,200 mm	800 mm to 1,200 mm	800 mm to 1,200 mm	800 mm to 1,200 mm
Installation position	Floor	Floor	Floor	Floor
Loading height (in steps of 200 mm)	840 mm to 1,240 mm	840 mm to 1,240 mm	840 mm to 1,240 mm	840 mm to 1,240 mm
Hollow shaft Ø	-	-	-	-



KP1-H HW

	KP1-H1100 HW	KP1-H2600 HW	KP1-H5000 HW	KP1-H6300 HW	KP1-H12000 HW
Rated payload	1,100 kg	2,600 kg	5,000 kg	6,300 kg	12,000 kg
Max. tool radius (in steps of 100 mm)	900 mm to 1,200 mm	900 mm to 1,200 mm	1,100 mm	1,100 mm	1,100 mm
Installation position	Floor	Floor	Floor	Floor	Floor
Loading height (in steps of 100 mm)	930 mm to 1,230 mm	930 mm to 1,230 mm	1,200 mm	1,200 mm	1,200 mm
Hollow shaft Ø	135 mm	135 mm	80 mm	175 mm	175 mm



KP1-HC

	KP1-HC500-2	KP1-HC750-2	KP1-HC1000-2	KP1-HC1500-2
Rated payload	500 kg	750 kg	1,000 kg	1,500 kg
Max. tool radius (in steps of 200 mm)	800 mm to 1,200 mm	800 mm to 1,200 mm	800 mm to 1,200 mm	800 mm to 1,200 mm
Installation position	Floor	Floor	Floor	Floor
Loading height (in steps of 200 mm)	840 mm to 1,240 mm	840 mm to 1,240 mm	840 mm to 1,240 mm	840 mm to 1,240 mm
Hollow shaft Ø	-	-	-	-
Counterbearing hollow shaft Ø	68 mm	68 mm	68 mm	68 mm

	KP1-HC2000	KP1-HC4000
Rated payload	2,000 kg	4,000 kg
Max. tool radius (in 250 mm-Schritten)	970 mm to 1,470 mm	970 mm to 1,470 mm
Installation position	Floor	Floor
Loading height (in 250 mm-Schritten)	1,000 mm to 1,500 mm	1,000 mm to 1,500 mm
Hollow shaft Ø	-	-
Counterbearing hollow shaft Ø	69 mm	69 mm



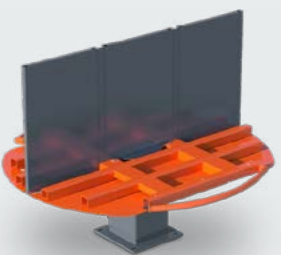
KP1-V2T

	KP1-V2T500	KP1-V2T1000
Rated payload per side	500 kg	1,000 kg
Installation position	Floor	Floor
Loading height	727 mm	575 mm
Station change	Electrical	Electrical
Possible work plates	1,200 x 800 mm	1,600 x 900 mm



KP1-V2T M

	KP1-V2T250 M
Rated payload per side	250 kg
Installation position	Floor
Loading height	727 mm
Station change	Manual
Possible work plates	1,200 x 800 mm



_Positioners / two-axis



DKP



DKP-400

Rated payload	400 kg
Installation position	Floor
Loading height	857 mm
Tilting range	±90°

_Positioners / three-axis



KP3-V2H

	KP3-V2H500-2	KP3-V2H750-2	KP3-V2H1000-2	KP3-V2H1500-2
Rated payload per side	500 kg	750 kg	1,000 kg	1,500 kg
Distance between face plates (in steps of 200 mm)	1,600 mm to 3,000 mm	1,600 mm to 3,000 mm	1,600 mm to 3,000 mm	1,600 mm to 3,000 mm
Max. tool radius (in steps of 200 mm)	600 mm to 1,000 mm	600 mm to 1,000 mm	600 mm to 1,000 mm	600 mm to 1,000 mm
Installation position	Floor	Floor	Floor	Floor
Loading height	835 mm / 950 mm	835 mm / 950 mm	835 mm / 950 mm	835 mm / 950 mm
Counterbearing hollow shaft Ø	68 mm	68 mm	68 mm	68 mm



KP2-HV



KP2-HV500

Rated payload	500 kg
Installation position	Floor, ceiling, wall, angle
Loading height	500 mm
Tilting range	±135°



KP3-H2H

	KP3-H2H500	KP3-H2H750	KP3-H2H1000
Rated payload per side	500 kg	750 kg	1,000 kg
Distance between face plates (in steps of 400 mm)	1,600 mm to 4,400 mm	2,000 mm to 4,400 mm	2,000 mm to 4,400 mm
Max. tool radius (in steps of 100 mm)	600 mm	600 mm to 800 mm	600 mm to 800 mm
Installation position	Floor	Floor	Floor
Loading height	1,019 mm	1,019 mm	1,019 mm
Counterbearing hollow shaft Ø	68 mm	68 mm	68 mm



KP2-HV HW



KP2-HV1100 HW KP2-HV2600 HW

Rated payload	1,100 kg	2,600 kg
Installation position	Floor	Floor
Loading height	1,085 mm	1,145 mm
Tilting range	±115°	±120°
Counterbearing hollow shaft Ø	135 mm	135 mm



KP3-V2MD

	KP3-V2MD2000
Rated payload per side	2,000 kg
Installation position	Floor
Loading height	880 mm
Hollow shaft Ø	139 mm



_Positioners / five-axis



KP2-SV HW



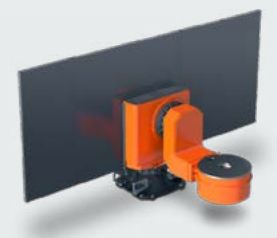
KP2-SV1100 HW KP2-SV2600 HW KP2-SV5000 HW

Rated payload	1,100 kg	2,600 kg	5,000 kg
Max. tool radius	1,030 mm	1,230 mm	2,200 mm
Installation position	Floor	Floor	Floor
Hollow shaft Ø	80 mm	175 mm	175 mm
Swivel range	±185°	±185°	±185°
Loading height	700 mm	700 mm	934 mm



KP5-V2S2V

	KP5-V2S2V500	KP5-V2S2V1000
Rated payload per side	500 kg	1,000 kg
Max. tool radius (in steps of 200 mm)	600 mm to 1,000 mm	600 mm to 1,000 mm
Installation position	Floor	Floor
Swivel range	±185°	±185°
Loading height	700 mm	700 mm





 kuka.com/contacts

 facebook.com/kukaglobal

 youtube.com/kukarobotgroup

 twitter.com/kukaglobal

 linkedin.com/company/kukaglobal

Angaben zur Beschaffenheit und Verwendbarkeit der Produkte stellen keine Zusicherung von Eigenschaften dar, sondern dienen lediglich Informationszwecken. Maßgeblich für den Umfang unserer Lieferungen ist der jeweilige Vertragsgegenstand. Technische Daten und Abbildungen sind unverbindlich in Hinblick auf Lieferungen. Änderungen vorbehalten. © 2022 KUKA