

## TZ 200.04

### Drilling jig for a casting



#### Description

- **practice model for technical drawing of jigs**
- **suitable for a broad range of learning matter**

The model comprises two elements: the actual drilling jig and a cast part representing the workpiece. The cast part is to be drilled with four through-holes using a standard drill. It is clamped in the jig and the drill is fed to it by way of bushes.

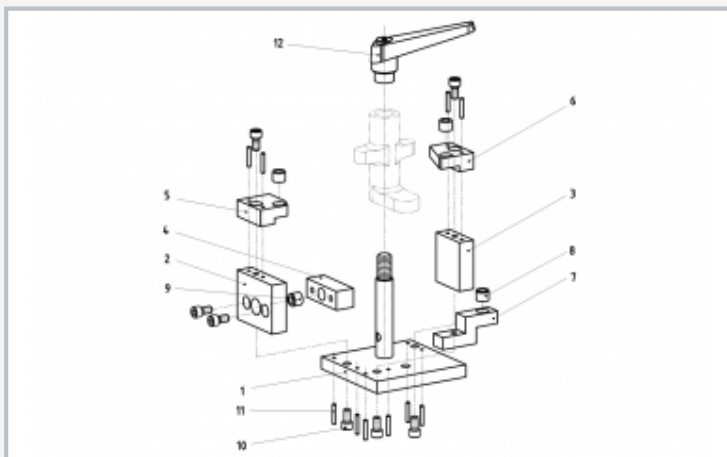
Core didactic aspects are reading and understanding technical drawings, standardised and production-oriented dimensioning of parts, sketching of suggested improvements or required parts. In addition, many other aspects can be covered with the aid of this interdisciplinary teaching model, including: jig geometry, cast parts, clamping techniques, and manufacturing technology.

#### Learning objectives/experiments

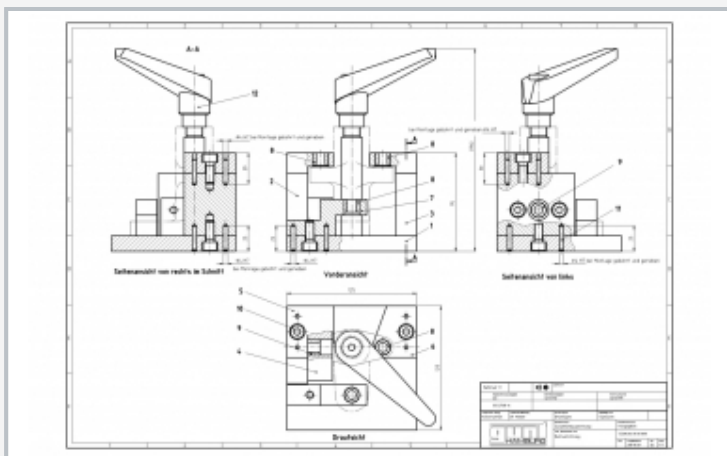
- **technical drawing**
  - ▶ familiarisation with three-dimensional views
  - ▶ production-oriented and standardised representation of components
  - ▶ surface finish and tolerance specifications
  - ▶ overview drawing, parts list
  - ▶ standard parts
  - ▶ 3D views
  - ▶ material specifications
- **technology**
  - ▶ jig and clamping techniques
  - ▶ manufacturing methods
  - ▶ work planning

# TZ 200.04

## Drilling jig for a casting



Exploded-view drawing of the drilling jig



Assembly drawing of the drilling jig



Drilling jig in use

### Specification

- [1] part of the GUNT technical drawing course
- [2] practical drilling jig for machining of a cast part
- [3] all drilling jig components made from steel, precision-manufactured, surfaces in gunmetal finish
- [4] instructional material incorporates action-oriented and interdisciplinary forms of teaching

### Technical data

LxWxH: 125x125x150mm (drilling jig)  
 LxWxH: 60x80x105mm (cast part)  
 Weight: approx. 5kg

### Scope of delivery

- 1 drilling jig
- 1 cast part
- 1 set of instructional material