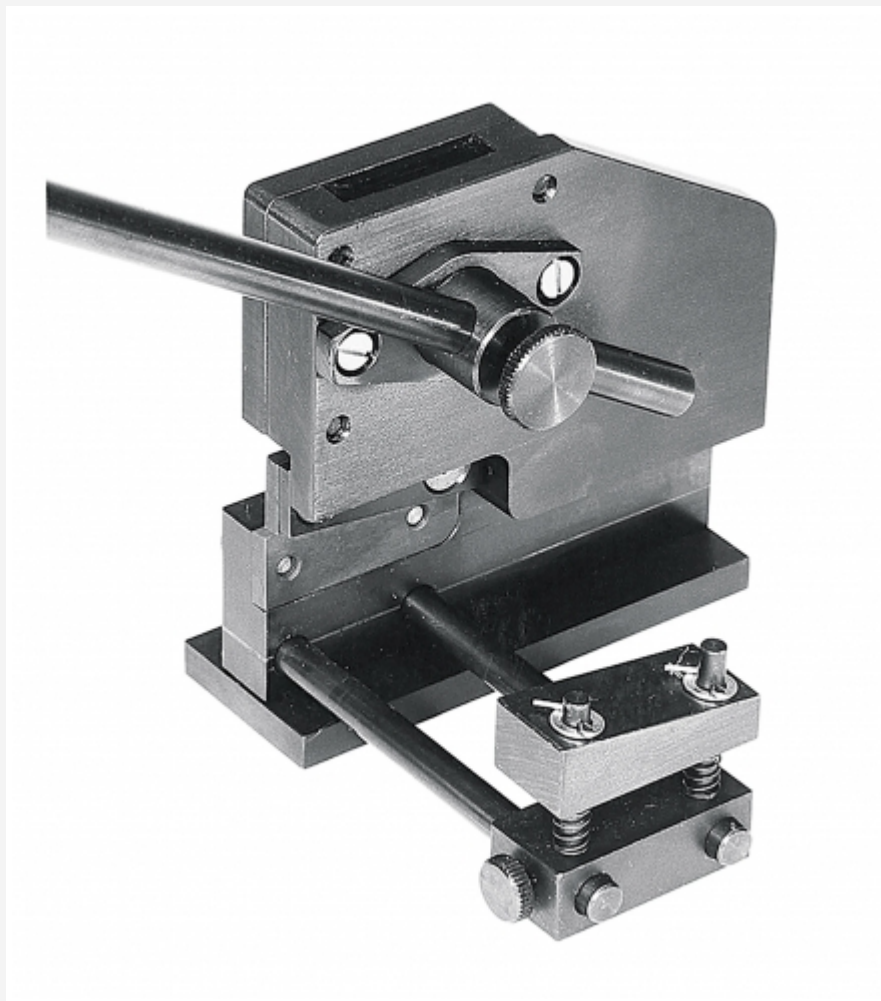


TZ 200.07

Lever shears



Learning objectives/experiments

- technical drawing
 - ▶ familiarisation with three-dimensional views
 - ▶ production-oriented and standardised representation of parts
 - ▶ surface finish and tolerance specifications
 - ▶ overview drawing
 - ▶ parts list
 - ▶ standard parts
 - ▶ 3D views
 - ▶ material specifications
- technology
 - ▶ assembly and disassembly
 - ▶ planning an assembly sequence
 - ▶ functions
 - ▶ material selection
 - ▶ manufacturing methods
 - ▶ length measurement exercises

Description

- functional lever shears as a practice model providing an introduction to technical drawing
- introduction to simple assembly sequences
- suitable for a broad range of learning matter

The lever shears model forms part of the extensive GUNT course providing an introduction to technical drawing. The didactic approach involves teaching the systematic and transferable learning matter based on an operational mechanism.

The lever shears model can be considered to be a project enabling interdisciplinary, action-oriented teaching. As well as the primary technical drawing focus of teaching, other topics that can be covered include machine elements, assembly processes, and manufacturing technology.

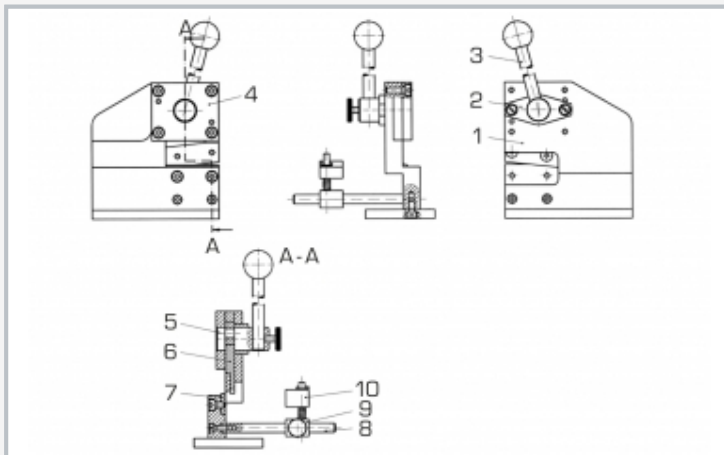
TZ 200.07 presents a hand-operated lever shears which can be used to cut thin metal sheets.

All parts are precision-manufactured on CNC machines. The surfaces of the steel parts have a gunmetal finish to prevent corrosion.

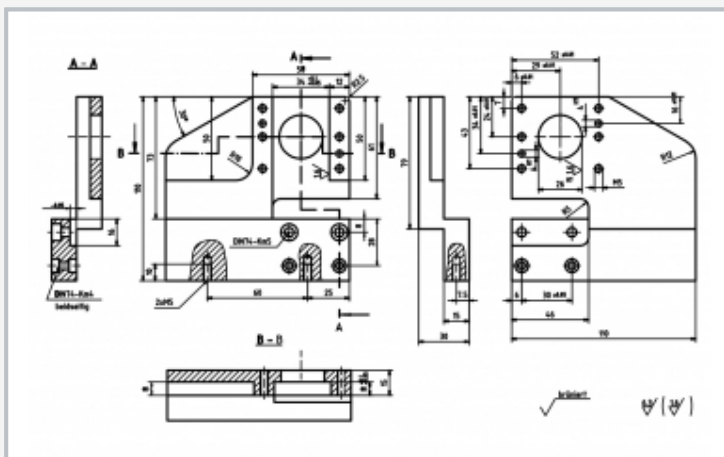
Comprehensive and well-structured instructional material supports wide-ranging use of the model in technical training. Optimal learning is established when one model is used with two/three students.

TZ 200.07

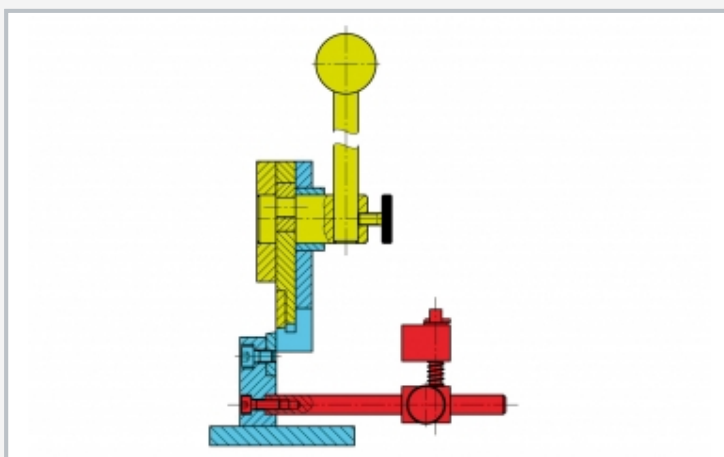
Lever shears



1 main body, 2 bearing flange, 3 lever rod with ball head, 4 bearing cover, 5 eccentric shaft, 6 shear body with top blade, 7 bottom blade, 8 guide rod, 9 guide, 10 stop



Production drawing of main body



Function groups of a lever shears: blue: main body, yellow: shear body, red: stop

Specification

- [1] part of the GUNT technical drawing course
- [2] complex function model of a lever shears
- [3] all lever shears components made from steel, precision-manufactured, with gunmetal surface finish
- [4] instructional material incorporates action-oriented and interdisciplinary forms of teaching

Technical data

LxWxH: 120x120x120mm (excluding lever)
Weight: approx. 3kg

Scope of delivery

- 1 lever shears, assembled
- 1 set of assembly/ disassembly tools
- 1 set of instructional material