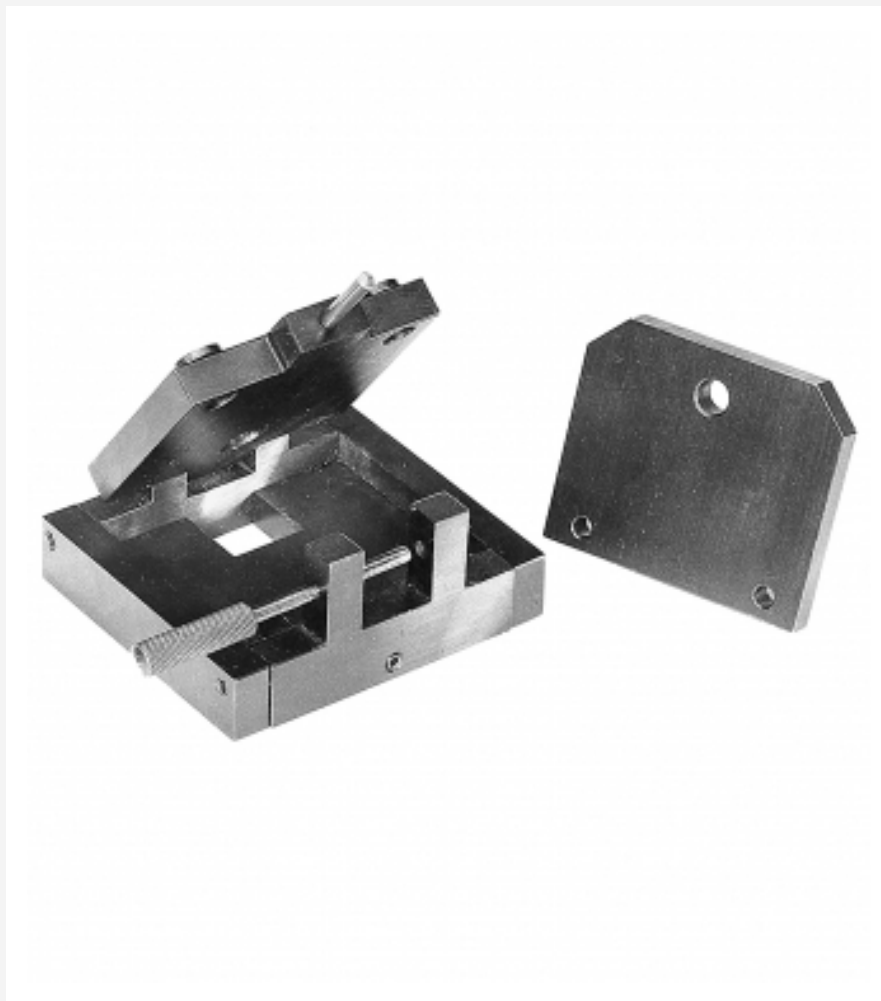


TZ 200.09

Drilling jig for flat part



Learning objectives/experiments

- reading and understanding technical drawings and parts lists
- production-oriented and standardised representation of parts: dimensioning, surface finish and tolerance specifications
- technological aspects: including; material selection, functions, manufacturing methods, work planning, manufacturing aids, and jigs and fixtures

Specification

- [1] part of the GUNT technical drawing course
- [2] practical drilling jig for machining of a planar part
- [3] all drilling jig components made from steel, precision-manufactured, with gunmetal surface finish
- [4] instructional material incorporates action-oriented and interdisciplinary forms of teaching

Technical data

LxWxH: 90x90x40mm (drilling jig)
 LxWxH: 70x60x8mm (plane part)
 Weight: approx. 2kg

Scope of delivery

- 1 drilling jig
- 1 planar part
- 1 set of instructional material

Description

- functional drilling jig as a practice model providing an introduction to technical drawing
- complete set of production-oriented drawings

The drilling jig model forms part of the extensive GUNT course providing an introduction to technical drawing. The didactic approach involves teaching the systematic and transferable learning matter based on an operational mechanism.

All parts are precision-manufactured on CNC machines. The surfaces of the steel parts have a gunmetal finish to prevent corrosion.

Comprehensive and well-structured instructional material supports wide-ranging use of the model in technical training. Optimal learning is established when one model is used with two/three students.