



## Table of Contents

Table of Contents	1
Power Engineering   Smart Grid   Micro Grid	2
Renewable Energies	2
EWG 1 Wind power plant with DFIG	3

# Power Engineering | Smart Grid | Micro Grid

## Training systems on the generation, distribution and management of electrical energy:

- Power engineering training system, distribution training system
- Energy generation training system, renewable energy generation training system
- Transformer training system, high-voltage transmission lines training system, protective systems training system
- Energy management training system, smart grid training systems

## The Lucas-Nülle training systems have been designed in anticipation of the newest developments:

- Smart measuring instruments provided with various communication interfaces (e.g. LAN, RS485, USB) and control elements
- SCADA Power Engineering Lab software for the intelligent control and evaluation of "smart grids" using Soft PLC
- SCADA software designed for educational purposes
- Permits investigation of dynamically alternating loads and power generation inside the laboratory
- Intelligent energy management
- Modular integration of renewable energies into a smart grid using protective engineering
- Wind power plant with doubly-fed asynchronous generator (DFIG) and synchronisation to the grid
- Interactive multimedia training course

## Renewable Energies

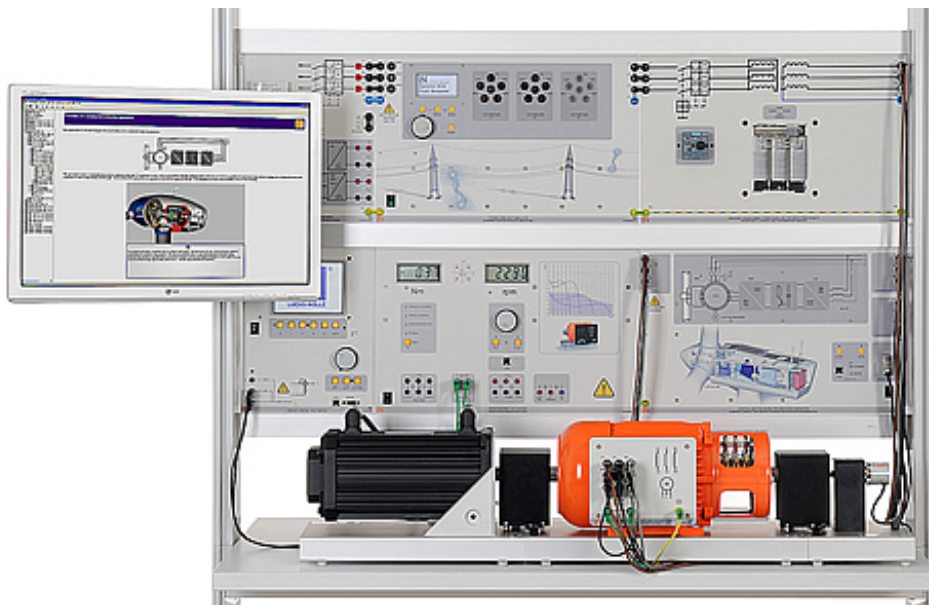


## **Renewable Energies**

The move away from coal, oil and nuclear power to renewable forms of energy is gaining momentum. Today, technology has evolved to a point where solar energy, wind power, hydrogen fuel and biomass can be exploited as environmentally friendly energy sources.

Throughout the world well-qualified technicians and engineers are being sought after to help keep this trend moving forward. Today, technologies are undergoing rapid change. This trend is being compounded by rising expectations in training and education. Lucas-Nülle has developed the appropriate training systems needed to cope with the ever more complex world of training and education.

## **EWG 1 Wind power plant with DFIG**



## **EWG 1 Wind power plant with DFIG**

This wind trainer is used to investigate the design and operation of modern wind power stations with double-fed induction generators.

The effect of wind force and the mechanical design of wind power stations can be emulated in realistic detail using the servo machine testing stand and the WindSim software. The control unit for the double-feed asynchronous machine (as a generator for the wind power plant) ensures user-friendly operation and visualisation during the experiments. The corresponding Interactive Lab Assistant Multimedia course is designed to convey knowledge and provide interactive support for carrying out the experiments and allows for PC-assisted evaluation of the measured data.

### Training content:

- Understand the design and operation of modern wind power plants
- Explore the physical fundamentals "From wind to wave"
- Learn about different wind power concepts
- Set up and commission a double-feed asynchronous wind generator
- Operate the generator with varying wind force levels and regulate the output voltage and frequency
- Manual and automatic synchronization with the 3-phase electricity grid
- Automatic control of active and apparent power, frequency and voltage
- Determine optimum operating points under changing wind conditions
- Investigate the operating response when there are faults on the grid ("fault ride-through")

### Your benefits:

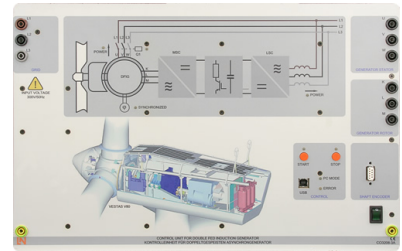
- Exact emulation of the technology of the current multi-megawatt wind power generators
- A fully working and functional training system for wind turbines with double-fed induction generators (DFIG)
- A wind simulation, which exactly mathematically emulates the wind at the shaft
- Investigating "fault-ride-through" (FRT) response to faults on the grid
- Measurement and display of all system variables
- Integrated power switch for connecting the generator to the 3-phase electricity grid
- Operation and monitoring using SCADA with the included WindSim software
- Limiting the power of the wind power plant (derating)
- Provision of reactive power

Basic equipment set, consisting of:

**Basic equipment set, consisting of:**

Pos.	Product name	Bestell-Nr.	Anz.
1	<b>Control unit for wind turbine, double-fed asynchronous generator</b>	CO3208-3A	1

Modern wind power stations use double-fed asynchronous generators to feed electrical power into the electricity grid. The control unit of the double-fed asynchronous generator permits control and operation of a speed-variable double-feed asynchronous generator in the laboratory. Using the control unit all of the practice-relevant operating states can be emulated and investigated. The WindSim software included ensures user-friendly operation and visualisation of the measurement values.



The control unit has the following features:

- Control unit with two controlled three-phase inverters
- Operation of the double-fed asynchronous generator in under-synchronous and over-synchronous operating mode
- Integrated power switch for connecting the generator to the 3-phase electricity grid
- Autonomous control of reactive and active power, frequency, voltage
- Manual and automatic synchronisation to the 3-phase electricity grid
- USB interface
- Input for incremental shaft-encoder
- Integrated brake chopper permits “fault ride-through” experiments
- Connection voltage: 3 x 300V, 50...60Hz
- Maximum output power: 1kVA
- Dimensions: 297 x 460 x 210mm (HxWxD)
- Weight: 8.3kg

---

## 2 Three-phase multi-function machine, 1.0kW

SE2662-6W

1

Three-phase asynchronous motor with slip-rings which can also be used as a synchronous machine.

- Nominal voltage: 400/230V, 50Hz
- Nominal current: 2.0A / 3.5A
- Nominal speed: 1400 / 1500rpm
- Nominal power: 0.8kW
- $\cos \phi$ : 0.75
- Exciter voltage: 130V AC / 24V DC
- Exciter current: 4A AC / 11A DC
- Dimensions: 500 x 220 x 250 mm (BxHxD)
- Weight: 20kg



---

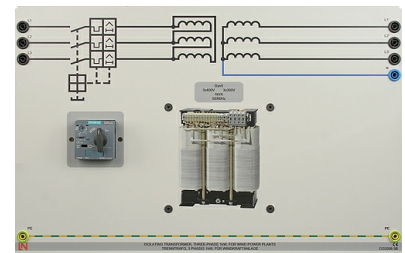
## 3 3-phase isolation transformer, 1kW for wind power plants

CO3208-3B

1

Three-phase transformer for power feed of double-fed wind power plants

- Primary voltage: 3 x 400 V
- Secondary voltage : 3 x 300 V
- Rated power: 1000 VA
- Fuse: 1 automatic circuit-breaker 1.6...2.5 A (adjustable)
- Inputs/outputs: 4-mm safety sockets
- Dimensions: 297 x 456 x 150 mm
- Weight. 11kg



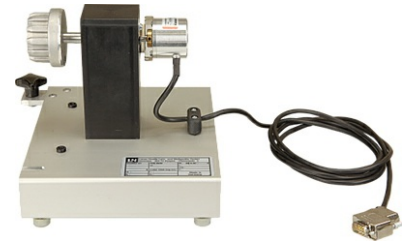
#### 4 Incremental position encoder 1024 pulses

SE2662-5T

1

The incremental encoder is equipped with the following features:

- 1024 pulses
- Speed: 6000 rpm
- Torque:  $\leq 1\text{Ncm}$
- Inertia:  $35\text{ g cm}^2$
- Weight: 1.7kg
- One shaft end



Supplementary material for "Fault Ride Through" experiments (FRT):



**Supplementary material for "Fault Ride Through" experiments (FRT):**

Training content:

- Investigating the response of wind power plants to system faults
- Exploring symmetrical fault scenarios
- Exploring asymmetrical fault scenarios
- Adjusting controller parameters
- Representing variables in the dynamic range as well as with positive phase sequence and negative phase sequence
- Compensation for the negative sequence components

Pos.	Product name	Bestell-Nr.	Anz.
------	--------------	-------------	------

**5 Dynamic grid fault simulator**

CO3208-3C

1

Modern wind turbines or photovoltaic power inverters are required nowadays to respond to faults in the electrical power grid without simply shutting down. Such a response is called "fault ride-through". The dynamic grid fault simulator emulates such faults in the electricity grid. This makes it possible to investigate the response of any equipment connected downstream from the fault.



The grid fault simulator has the following features:

- Adjustable power failure durations from 50ms to 1000ms
- 5-level, adjustable voltage drop for all phases
- Symmetrical and asymmetrical grid faults can be set up
- Faults can be selected with or without earth contact
- Adjustable start angle fault ride-through analysis
- Graphic display
- Connector voltage: 3 x 400V, 50..60Hz
- Dimensions: 297 x 460 x 210mm (HxWxD)
- Weight: 18kg

**Additionally required, dynamic servo machine test stand:**

Pos.	Product name	Bestell-Nr.	Anz.
------	--------------	-------------	------

**6 Servo machine test bench for 1kW machines incl. ActiveServo software(D,GB,F,E)**

CO3636-6W

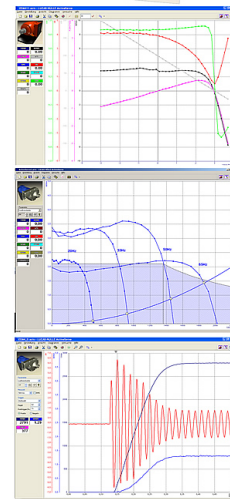
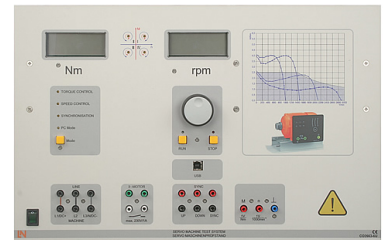
1



The servo-machine test bench is a complete testing system for examining electrical machines and drives. It consists of a digital controller, a brake and the ActiveServo software. The system combines state-of-the-art technology with ease of operation. The system also allows manual and automated synchronisation to be carried out.

The controller has the following features:

- Dynamic and static four-quadrant operation
- 10 selectable operating modes/machine models (torque control, speed control, flywheel, lifting drive, roller/calander, fan, compressor, winding gear, arbitrarily defined time-dependent load, manual and automated network synchronization)
- Integrated galvanically isolated amplifier for voltage and current measurement
- Speed and torque displays
- Four-quadrant monitor
- USB interface
- Thermal monitoring of the machine under test
- Testing for the presence of a shaft cover.
- Connection voltage: 400V, 50Hz
- Maximum power output: 10kVA
- Dimensions: 297 x 460 x 420mm (HxWxD)
- Weight: 14.3kg



The brake is self-cooled asynchronous servo-brake with resolver.

The motor and sensor leads are connected via polarity-safe plugs. The machine has thermal monitoring and, in conjunction with the controller, it constitutes a driving and braking system that is free of drift and requires no calibration.

- Maximum speed: 4000rpm
- Maximum torque 30Nm
- Temperature monitoring: continuous temperature sensor (KTY)
- Resolver resolution: 65536 pulses/revolution
- Dimensions: 275 x 210 x 210mm (WxHxD)
- Weight: 6kg

ActiveServo is a program for recording characteristics of machines and for determining dynamic and static operating points. It emulates seven different loads (flywheel, pump, calander, lifting drive, compressor, winding gear, arbitrarily configurable time-dependent load) for which the parameters can be individually configured.

Features:

- Measurement, calculation and display of mechanical and electrical variables
- (Speed, torque, mechanical power output, current, voltage, active, apparent and reactive power, efficiency, power factor)
- Simultaneous display of measured and calculated values (e.g. instant display of efficiency)
- Measurement of voltage and current (including RMS values even for non-sinusoidal waveforms)
- Speed or torque-controlled operation
- Recording of variables over time
- Programming of limiting values of speed or torque to prevent inappropriate loading of the machine under test.
- Operation in all four quadrants (display of generated torque)
- Arbitrarily defined ramp functions for PC-controlled load experiments
- Display of characteristics from several experiments to better illustrate the effect of parameter changes
- Export of graphics and measurements

---

## 7 Rubber coupling sleeve, 1kW

SE2662-6A

2

Rubber coupling sleeve for the coupling of two machines.

- Permits rapid and safe assembly
- Designed with internal ring gear
- Material: rubber (neoprene)
- Dimensions: 40 x 58 mm (length x diameter)
- Weight: 0.1kg



**8 Coupling guard, 1kW**

SE2662-6B

2

Attachable metal guard used to protect against accidental physical contact with the coupling location where rotation occurs between two connected machines.

- Material: black steel plating, folded with function plug
- Dimensions: 140 x 75 x 80mm (HxWxD)
- Weight: 0.1kg



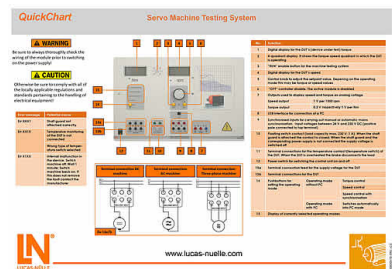
**9 QuickChart, Servo-machine test stand safety and operating instructions (GB)**

SO6200-7D

1

Short documentation covering the putting into operation of complex equipment and experiment set-ups.

- Terminal assignment, safety instructions, help
- Circuit and assembly diagrams
- Colour print in DIN A3 format
- Laminated: 2 x 250 µm



**Media:**



Pos.	Product name	Bestell-Nr.	Anz.
------	--------------	-------------	------

**10 Interactive Lab Assistant: Wind power plants with DFIG**

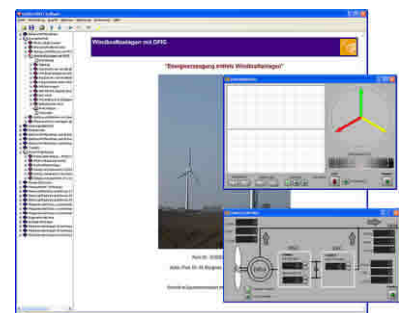
SO2800-3D

1

The experiment instructions come in the form of the Interactive Lab Assistant course. This multimedia course is a step-by-step guide through the field of wind power stations. The basic physics and mechanical processes are demonstrated using easy-to-understand animations. The Interactive Lab Assistant together with the WindSim software forms the core elements of a user-friendly experiment environment.

Special features:

- Interactive experiment set-ups
- Measured values and graphics can be stored in the instruction



section via drag and drop

- WindSim software can be started directly from the experiment instructions
- Questions with feedback and evaluation logic help to monitor progress
- Print document feature available for easy hardcopy printing of experiment instructions with solutions
- CD-ROM with Labsoft browser, course software and WindSim software

The WindSim software performs controlling operation of the control unit of the double-feed asynchronous generator and drive unit. Different wind speeds and profiles can be set and emulated with this device. This imposes the same operating states onto the generator shaft as those affecting a real wind power station. At the same time, the software permits the control, parameterisation and visualisation of the double-feed asynchronous generator's operating parameters.

Special features include:

- Detailed emulation of a modern wind power station
- Measurement, calculation and graphic representation of all mechanical and electrical operating parameters (SCADA)
- Automatic or manual operation
- Manual and automatic synchronization with the 3-phase electricity grid
- Selection of setpoint values for active and reactive power
- Definition and emulation of wind power and wind profiles
- Operating with various wind forces including pitch control
- Step-by-step initial setup and commissioning to demonstrate functional operation
- Export feature for graphics and measured values
- Limiting the power of the wind power plant (derating)
- 32-bit version for Windows
- Course duration 20 h approx.

## 11 Interactive Lab Assistant: Fault Ride-Through of wind power plants

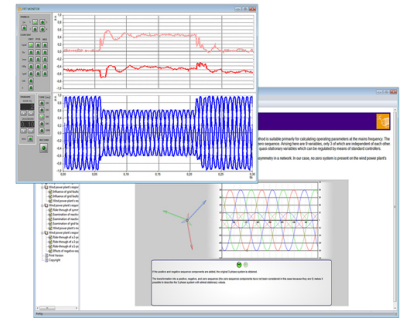
SO2800-3E

1

The experiment instructions make up an Interactive Lab Assistant course. This multimedia course goes through the topic of "fault ride through" for modern wind power plants step by step.

Features:

- Interactive experiment set-ups
- Measurements and graphics can be saved in the experiment plans themselves via drag and drop
- Questions with feedback and evaluation logic for testing knowledge
- Printable documents for easy printing of experiment instructions complete with solutions
- CD-ROM with Labsoft browser, course software and WindSim software



The FRT software handles recording and visualisation of the measurements.

Features:

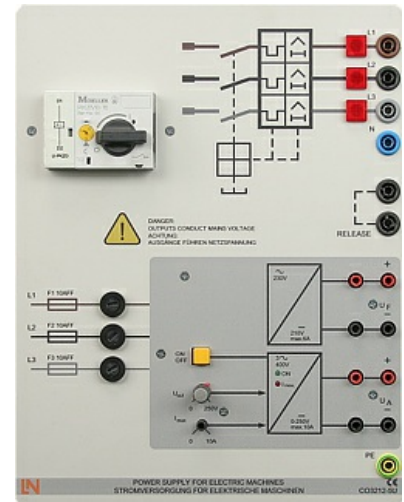
- Display of instantaneous values
- Display of RMS values
- Pre-set templates for desired values of active and reactive power
- Export of graphics and measurements
- 32-bit version for Windows
- Course duration 16 h approx.

## Power supply:

Pos.	Product name	Bestell-Nr.	Anz.
12	<b>Universal power supply for electrical machines</b>	CO3212-5U	1

Power supply for DC, AC and three-phase current and for excitation of synchronous machines. The supply is specially designed for use with electrical machines.

- **Outputs:**  
Three phase: L1, L2, L3, N from 4-mm safety sockets  
DC: 0...240VDC variable, controlled and electronically protected against overload and short circuits.  
Output current: 3...10A (adjustable current limiting)
- **Second DC supply ca. 210VDC, 6A fixed**
- **Protective systems:**  
Motor protection switch adjustable from 6.3...16A  
Under voltage trip  
Safety cut-out
- **Power connection: 3x 230/400V, 50/60Hz via CEE plug with 1.8m power lead**
- **Dimensions: 297 x 228 x 140mm (HxWxD)**
- **Weight: 3kg**



## Measuring instruments:

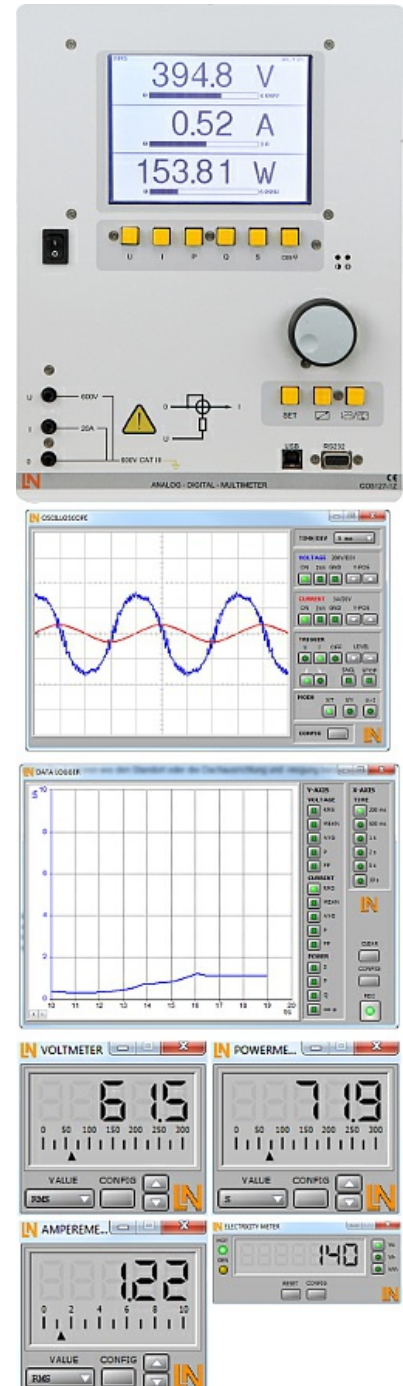
Pos.	Product name	Bestell-Nr.	Anz.
13	Digital/analog multimeter, wattmeter, power-factor incl. software	CO5127-1Z	1

The areas of electrical machines, power electronics and drive technology pose particular problems for measuring instruments. In addition to high-performance overload protection, the acquisition of measurement values must be performed accurately independently of the curve's shape. The universal measuring device has been designed particularly to satisfy these requirements. It can simultaneously replace as many as four different measuring instruments – constituting a current/voltmeter, power and phase-angle meter all in one. The graphic display allows for both student as well demonstration experiments. The VI Starter software included allows for visualisation of measurements on a PC.




- Simultaneous, measurement of voltage and current independent of the curve shape (max. 600 V, 20 A) (measurement of clocked voltages)
- Calculation of active, apparent and reactive power as well as the power factor
- Measurement of the total rms (RMS-AC+DC), AC rms (RMS-AC) and arithmetic mean (AV-AC+DC)
- Impervious to electrical damage up to 20 A/600 V
- Large-scale, high-contrast background-illuminated graphic display (5.7")
- Large-scale display or display of up to 4 measurement values
- Digital or pseudo-analog display
- USB interface
- Internal resistance: current path 10 mΩ, voltage path 10 MΩ
- Voltage ranges: 30, 300, 600 V
- Current ranges: 1, 10, 20 A
- Measurement accuracy: 2%
- Automatic or manual measurement range selection
- Demonstration test instrument for measuring properties of the electricity supply
- Operating voltage: 230V, 50/60Hz
- Dimensions: 297 x 228 x 85 mm (HxBxT)
- Weight: 1.5 kg

The VI Starter software allows all the measurements to be displayed on the PC. Up to 17 different displays can be opened.

- Oscilloscope display of voltage, current and power
- Consumption meter to display power consumed and output
- Data logger for 14 different variables
- Data export for data logger
- Characteristic recorder
- LabVIEW driver and supplied examples



## Accessories:

Pos.	Product name	Bestell-Nr.	Anz.
14	<b>Safety connecting plug 4mm with tap (2x), black, 1000V/32A CAT II</b>	SO5126-3R	40
	Moulded insulation		
	<ul style="list-style-type: none"><li>• both sides with touch protection (safety plug + safety sockets), distance 19 mm</li><li>• transition resistance max. 6 mΩ</li><li>• rated data: 1000 V / 32 A CAT II</li><li>• colour black</li></ul>		
15	<b>Safety connecting plug 4mm with tap (2x), green/yellow, 1000V/32A CAT II</b>	SO5126-3W	4
	Moulded insulation		
	<ul style="list-style-type: none"><li>• both sides with touch protection (safety plug + safety sockets), distance 19 mm</li><li>• transition resistance max. 6 mΩ</li><li>• rated data: 1000 V / 32 A CAT II</li><li>• colour green/yellow</li></ul>		
16	<b>Safety connecting plug 4mm with tap (2x), blue, 1000V/32A CAT II</b>	SO5126-3V	2
	Moulded insulation		
	<ul style="list-style-type: none"><li>• both sides with touch protection (safety plug + safety sockets), distance 19 mm</li><li>• transition resistance max. 6 mΩ</li><li>• rated data: 1000 V / 32 A CAT II</li><li>• colour blue</li></ul>		



## 17 Set of safety measurement cables, 4mm (31 leads)

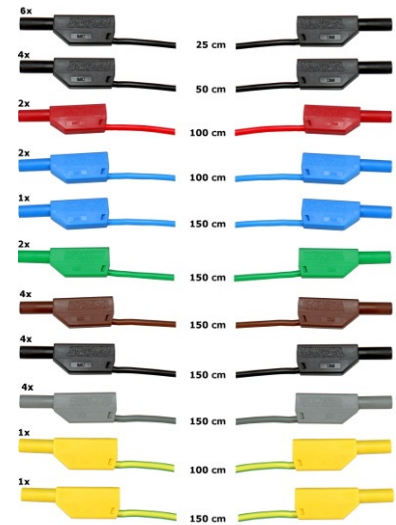
SO5148-1L

1

Safety measurement cables with 4mm safety plugs, coloured, PVC insulation, highly flexible

Each set includes the following:

- 6 x 25cm long, black
- 4 x 50cm long, black
- 2 x 100cm long, blue
- 2 x 100cm long, red
- 1 x 100cm long, green/yellow
- 1 x 150cm long, blue
- 1 x 150cm long, green/yellow
- 2 x 150cm long, green
- 4 x 150cm long, brown
- 4 x 150cm long, black
- 4 x 150cm long, grey
- Wire cross section 2.5 mm<sup>2</sup>
- Capacity/category: 600V CAT II, 32A



## 18 Mobile aluminum experiment stand, 3 levels, power strip with 6 sockets, 49"x28"x79" WxDxH (1250x700x1995mm)

ST7200-4C

1

High-quality mobile experiment and demonstration trolley from the SybaPro range featuring aluminium table legs and low-level shelf. This trolley is suitable for mounting under-table cabinets and is compatible with all add-ons and extensions in the SybaPro range.

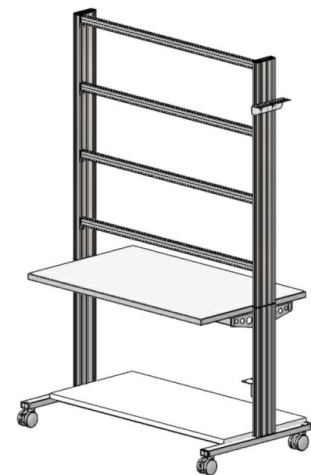
It is supplied with one shelf, an angle bracket for attaching a PC and a cable holder.

### Table top + Shelf:

- 30-mm table top made of highly compressed, multi-layer fine chipboard conforming to DIN EN 438-1
- Colour grey, RAL 7035, with 0.8-mm slightly textured laminate coating (Resopal) on both sides, conforming to DIN 16926
- Resistant to many chemicals and reagents including dilute acids and alkalis
- Resistant to heat, e.g. molten solder or heating at specific points such as by soldering tips or cigarette ends
- Frame with solid impact-resistant protective edging made of 3mm thick RAL 7047 coloured plastic
- Coating and adhesive are PVC free
- Power strip with 6 outlet sockets mounted underneath the table top, lead and earthed plug

### Frame:

- 2 extruded aluminium profiles with multiple grooves 1800 x 120 x 40 mm (WxHxD)
- 8 equally sized grooves in extruded aluminium profiles (3 on each side and 1 each on the front and back)



- Grooves accommodate standard industrial mountings
- 4 H-shaped aluminium profiles, 1150 mm, for 3-layer organisation of DIN A4 panels
- Space for extension of power supply duct
- Base made of rectangular tubing with 4 swiveling double casters, 2 of which have brakes
- Table frame made of tough combination of rectangular tubing around the full perimeter
- Acid-resistant epoxy-resin coating, 80 µm thick (approx.), colour RAL 7047

Cable holder:

- Width 200 mm with 12 cable slots to accommodate 48 x 4-mm safety measurement leads

PC attachment bracket:

- With 3 screw-on rubber stoppers, dimensions 65x65x114 mm approx. (top fixing for PC)

> The height of the cable holder and PC attachment bracket can be adjusted along the aluminium profiles

> For attachment to left or right, fastening materials included

> Acid-resistant epoxy-resin powder coating of thickness 80 µm approx., colour RAL 7047

Dimensions:

- Height of table top 760 mm
- 1250 x 1970 x 700 mm (WxHxD)

The mobile experiment stand is supplied in kit form and needs to be assembled by customers themselves.

**19 Protected power distribution for working stations**

ST8008-8N

1

400-V CEE distribution panel with automatic circuit breakers for attachment to profiles on experiment trolleys or direct to table-top.

- 2 CEE sockets (400 V, 16 A, 5-pole) with safety flap
- 1 Socket outlet with earth (230 V)
- Circuit breaker: 1 x 3-pole line circuit breaker, type B, 16 A
- Power connection: 3 x 230/400 V, 50/60 Hz via CEE plug, 4-m power lead
- Dimensions: 510 x 120 x 110 mm (HxWxD)
- Weight: 5 kg



---

20 **Monitor holder for flat screen monitor of weight up to 15 kg / 33 lbs VESA 75/100**

ST8010-4T

1

Pivoting monitor holder for attachment to aluminium profiles of furniture in the SybaPro range. Allows a monitor to be placed in the optimum position so that work and experiments are less tiring.



- Pivoting arm with two-part joint
- Quick-lock for adjustment to any height on extruded aluminium profile
- VESA fastening 7.5 x 7.5cm
- Includes VESA 75 (7.5x7.5) - VESA 100 (10x10) adapter
- 2 Cable clips
- Adequate carrying capacity 15 kg / 33 lbs
- TFT monitor can be turned parallel to the table edge
- Separation can be adjusted to anywhere between 105 and 480 mm

Additionally included:

Cable management set for installing cables along the profiles of the aluminium lab system furniture in the SybaPro range, consisting of:

- 3 Cross cable binders for front and rear grooves of aluminium profile
- 3 Cross cable binders for side grooves of aluminium profile
- 12 Cable ties
- 4 Aluminium cover profiles for covering and enabling wires to be run along the grooves of an aluminium profile

---

21 **Keyboard adapter for flat screen monitor holders**

ST8010-4G

1

Keyboard adapter for use in combination with flat screen monitor holders



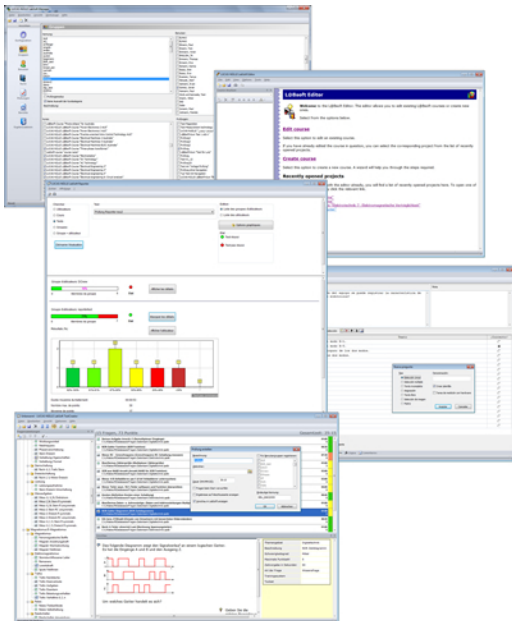
- Mounted between monitor and mount for flat screen monitor holder
- Variable 3-level height adjustment via multiple pre-drilled mounting holes
- Two rows of mounting holes for use with equipment meeting VESA 75 and VESA 100 standards
- Keyboard shelf inclined by about 30° for comfortable and ergonomic usability
- Keyboard shelf with 11-mm folded edging to prevent falling, including handle
- Variable 2-level depth attachment for keyboard shelf (252/276 mm)
- Extra-wide keyboard shelf (640 mm) can accommodate a mouse as well
- Depth of keyboard shelf 172 mm
- Includes two cable clips for guiding and bundling cables
- Maximum load 10 kg
- Dimensions (HxWxD) 360 x 640 x 276 mm

Dust cover for three-level experiment trolleys

- For protecting equipment from dust and damp
- For keeping equipment out of sight (the cover must not be transparent, so is therefore opaque)
- Colour: matt dark grey with printed LN logo in orange
- Material: nylon fabric with polyurethane coating
- High resistant to tearing, impregnated to be washable and waterproof



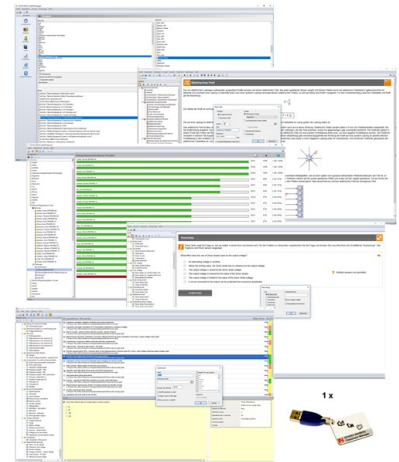
Recommended learning management software for all LN multimedia courses:



Pos.	Product name	Bestell-Nr.	Anz.
23	LabSoft Classroom Manager 5.0 software suite, single license	SO2001-5A	1

LabSoft Classroom Manager is a comprehensive set of administration software for the UniTrain system and all LabSoft courses. Classroom Manager comprises the following independent program components:

- LabSoft Manager: Administration of students and courses in LabSoft
- LabSoft Reporter: Student reports and statistics
- LabSoft Editor: Creation and editing of courses and tests
- LabSoft Questioner: Creation of questions, measuring exercises and sets of questions for courses and tests
- LabSoft TestCreator: Automatic generation of tests on the basis of sets of questions



Features:

- Ease of use of all programs thanks to graphical user interface in all component programs
- For use in local area networks or on stand-alone PC
- Ease of installation
- No additional database software required
- Access control via USB dongle
- Available languages: DE, EN, ES, FR, RU, PT, ZH, LO

LabSoft Manager:

- Administration of LabSoft network installation
- Administration of an unlimited number of students and courses in LabSoft
- Addition, deletion and editing of courses and tests in LabSoft
- Addition, deletion and editing of students and student data
- Addition, deletion and editing of student groups (classes)
- Assignment of students to classes
- Activation of team function in LabSoft
- Assignment of courses and tests to students or classes

LabSoft Reporter:

- Electronic monitoring of student progress
- Graphical presentation of progress in courses and tests
- Presentation of student or group results
- Reports on courses, tests, single users or classes
- Summary of results and time
- Export of data to clipboard or file
- Display and printing of tests which have been taken with the candidate's original answers

- Multiple search options for students, classes, courses or tests

#### LabSoft Editor:

- HTML editor for easy to use editing of LabSoft courses
- Editing of course pages
- Wizard for creation of new courses and course pages
- Automatic inclusion of new courses in an existing LabSoft installation
- Automatic creation of IMS-compatible navigation tree without the need for programming knowledge
- Moving course pages within the navigation tree at the click of a mouse
- Editing in WYSIWYG mode
- HTML view and page preview
- Insertion of graphics, animations and tables
- Insertion of test questions
- Page templates for a variety of page types

#### LabSoft Questioner:

- Program for creating and editing questions, practical measuring exercises and sets of questions (question files) for electronic evaluation
- Easy creation of exercises and questions for courses and tests
- 7 different types of question: single and multiple choice, missing text, assignment, matrices, arbitrary text, selection of images
- Ability to input meta data (points, time for questions, difficulty, required resources, etc.)
- Easy specification of tolerances for practical measuring exercises
- Changes to the assessment criteria for courses or tests (including after the test has been taken)

#### LabSoft TestCreator:

- Program for automatically creating electronic tests from sets of questions (question files)
- Automatic and manual selection of questions and measuring exercises
- Filter functions (e.g.: type of question, difficulty) for pre-selection of questions
- Automatic generation of tests according to a set time or number of questions
- Various test options: arbitrary order of questions in a test, immediate display of results after completion
- Automatic registration of tests in LabSoft
- Preview function showing the test as created

#### Includes:

- CD-ROM with LabSoft Classroom Manager
- 1 USB-dongle for operation of program

System requirements:

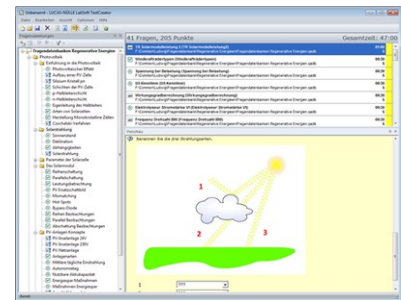
- Server or PC with Windows 7, 8, 8.1 or 10
- Microsoft Internet Explorer 9.0 or higher
- Minimum 200 MB free disk space
- 1 free USB-port for USB-dongle

## 24 Collection of assignments Power Engineering / Renewable Energies

SO2001-6D

1

Collection of electronic assignments questions and measuring exercises for the UniTrain courses on the topic of electrical power engineering and renewable energies. With the help of Labsoft TestCreator, these questions and measuring exercises can easily be assembled into electronic tests. The tests can then be carried out in LabSoft.



- A total of some 200 questions and measuring exercises for the UniTrain courses on the topics of Photovoltaics, Fuel cell technology, Transient processes in AC and DC networks and the multimedia course Small wind power plant
- About 25% are practical exercises to be carried using the training systems in order to test handling skills and practical abilities
- About 30% are newly assembled questions previously contained in the courses
- It is possible to extend the collection with your own questions and assignments
- Other collections can be imported
- All questions and assignments can be edited
- 6 different types of questions (single choice, multiple choice, missing text, matching, matrix matching and image choice)
- Extensive metadata for all questions and assignments to make it easier to create tests (degree of difficulty, points, topic area, time to complete, type of question, training systems needed for practical exercises)